



ASSEMBLYMEMBER KEVIN MCCARTY

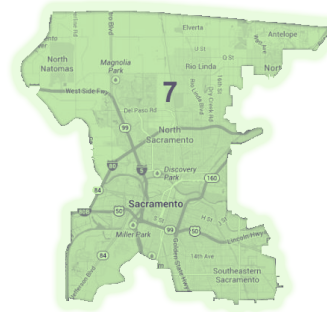
CHILD CARE

IN AD 7



DISTRICT SNAPSHOT

For Sacramento County



9,015	Children Served
5,039	Families served
\$2,606	Average monthly income of enrolled families
320	Children of Essential workers enrolled since March 2020
188	Permanent Child care provider closures
219	Temporary Child care provider closures
700	Children in CalWORKs Stage 1
2,608	Children in CalWORKs Stage 2
3,431	Children in CalWORKs Stage 3
872	Children in Early Head Start
4,236	Children in Head Start
2,976	Children in CAPP
2,137	Children on waitlist for AP in Sacramento

Child Care Requests (By age group)

Under 2 years:	28%
2-5 years:	35%
Over 6 years:	37%

% of children for whom child care spaces are (un)available county wide:

Available: 26.4%
Unavailable: 73.6%

CDE funding for child care programs in Sacramento:

\$109,035,283

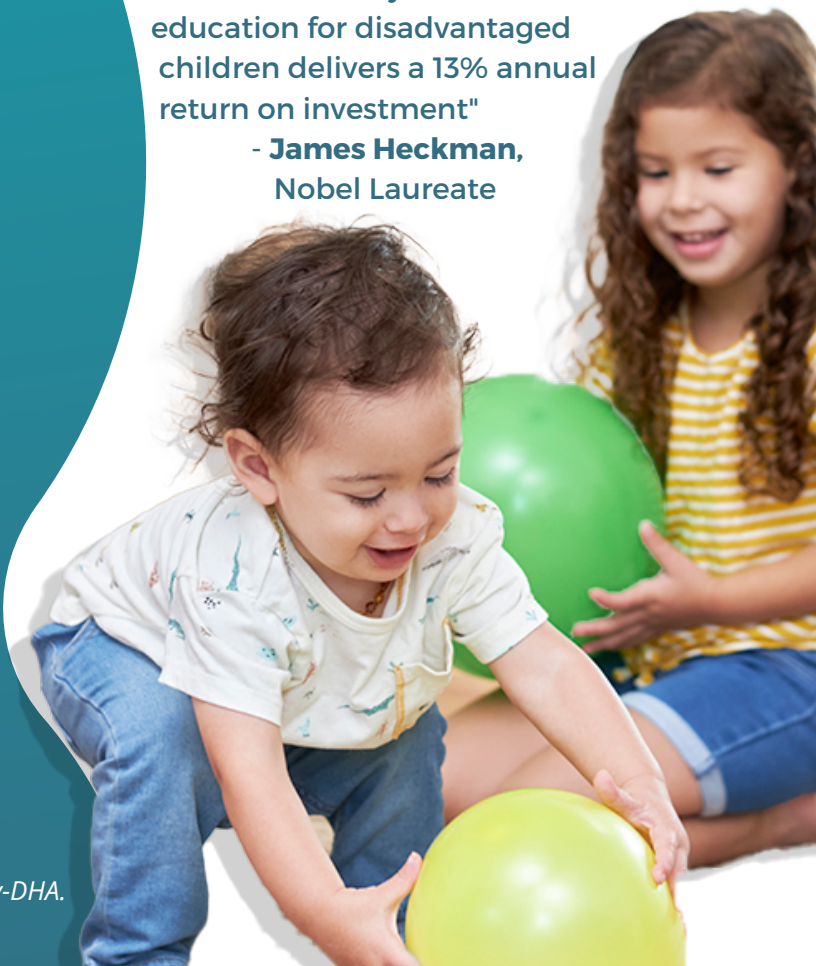
C2AP, C3AP, CAPP, CFCC, CRRP, CCIP and CHST

Investment for Bridge Program in Sacramento:

\$1,439,336

"Every dollar invested in high-quality birth-to-five early childhood education for disadvantaged children delivers a 13% annual return on investment"

**- James Heckman,
Nobel Laureate**



COUNTY Sacramento PORTFOLIO

CHILDREN 0-5
LIVING IN
POVERTY

22,912



PEOPLE
LIVING IN
POVERTY

217,412

TOTAL CHILDREN IN
SUBSIDIZED CARE

16,306



MAJOR REASONS FAMILIES SEEK
CHILD CARE



96% Employment



**4% Parent in
School or Training**



**1% Parent Seeking
Employment**

THE COST OF
CHILD CARE



0-23 Month Olds

Center: \$14,240

Family Child
Care Home: \$9,594



2-5 Year Olds

Center: \$9,913

Family Child
Care Home: \$8,955



MEDIAN
FAMILY
INCOME¹

\$72,471

MEDIAN
SUBSIDY FAMILY
INCOME²

\$32,208

LICENSED CHILD CARE
SUPPLY



CENTERS: 473



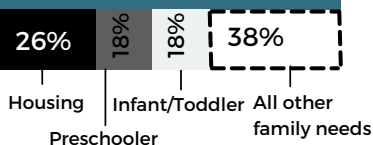
FAMILY CHILD
CARE HOMES: 1,217

TOTAL: 1,690

CHILD CARE & FAMILY
BUDGETS

Income eligible family
without subsidy¹

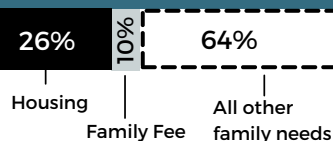
\$54,026¹ Annual income



¹ 70% of 2018
State Median
Income for a
family of three

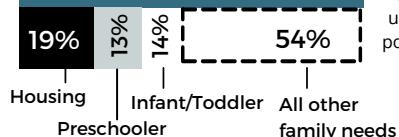
Income eligible family
with subsidy¹

\$54,027 Annual income



Median Family Income²

\$72,471 Annual income



² American
Community
Survey 2018
1-year estimates.
Poverty is defined
using the federal
poverty guidelines.



LABOR FORCE

69,221

Two-parent families,
both parents in labor
force

42,116

Single-parent families,
parent in labor force

CHILD CARE CAPACITY

AD 7

Family Child Care	Infant Care	Preschool	School Age	Total Center Capacity
4,514	930	7,133	2,425	10,488

Source: California Resource & Referral Network

Sacramento County Closures

Facility Closures and New Licenses Between March 2020 and January 2021, and Net Loss or Gain of Facilities by County as of January 31, 2021

	Permanent Closures Between March and January 2021		Closure Percentage of Total Licensed Facilities		Total Licensed Facilities as of January 31, 2021		New Licenses Between March and January 2021		Net Loss and Gain	
County	Number of Facilities Closed	Total Closed Facility capacity	% of total licensed centers	% of total Total Capacity	# of Facilities	Total Capacity Licensed Facilities	% of New Licenses	Total Capacity of New Licensed Facilities	Net Loss or Gain in # of Facilities	Net Loss or Gain in # of Capacity
Sacramento	180	2,574	9%	5%	2,107	48,609	223	2,994	32	558
Small Family Child Care Homes	126	1,008	13%	13%	951	7,608	172	1,376	11	88
Large Family Child Care Homes	32	448	7%	7%	475	6,650	21	294	13	182
Day Care Center	13	742	3%	3%	434	23,548	15	713	2	-16
Infant Center	6	180	5%	6%	122	2,815	8	189	2	-2
School Age Day Care Center	3	196	2%	2%	125	7,988	7	422	4	306

To see Yolo County [click here](#)



DISTRICT RESOURCES

First 5

First 5 California is dedicated to improving the lives of California's young children and their families through a comprehensive system of education, health services, childcare, and other crucial programs. Since its creation, First 5 California has brought these critical services to millions of parents, caregivers, and children ages 0 to 5, and we're striving to reach thousands more every day.

Local Planning Council

The primary mission of the LPCs is to plan for child care and development services based on the needs of families in the local community. LPCs are intended to serve as a forum to address the child care needs of all families in the community for all types of child care, both subsidized and non-subsidized.

Resource and Referral

Child care resource and referral agencies (R&R) are state-funded, community-based programs that exist in every county in California. R&Rs make up a well-developed system that supports parents, child care providers, and local communities. The California Department of Education, Early Learning and Care Division has supported these efforts since 1976.

Alternative Payment Programs

Community-based public and private nonprofit agencies that provide child care and other supports to income eligible families in each of California's 58 counties. The CAPPA network promotes parental choice and supports the whole family with access to child care, food programs, housing, and other supports to lift families up from poverty to self-sufficiency.

Head Start

Operated by over 1,600 community partners in all 50 states, Head Start and Early Head Start are comprehensive birth to five programs specifically designed to strengthen families, promote school readiness, and improve child health. In California, the federal investment in Head Start generates over one billion dollars annually, allowing Head Start programs in California to serve over 100,00 children and their families, and employing more than 24,000 people. Head Start serves nearly 20% of California's children in childcare.



HOW FAMILIES ACCESS CHILD CARE

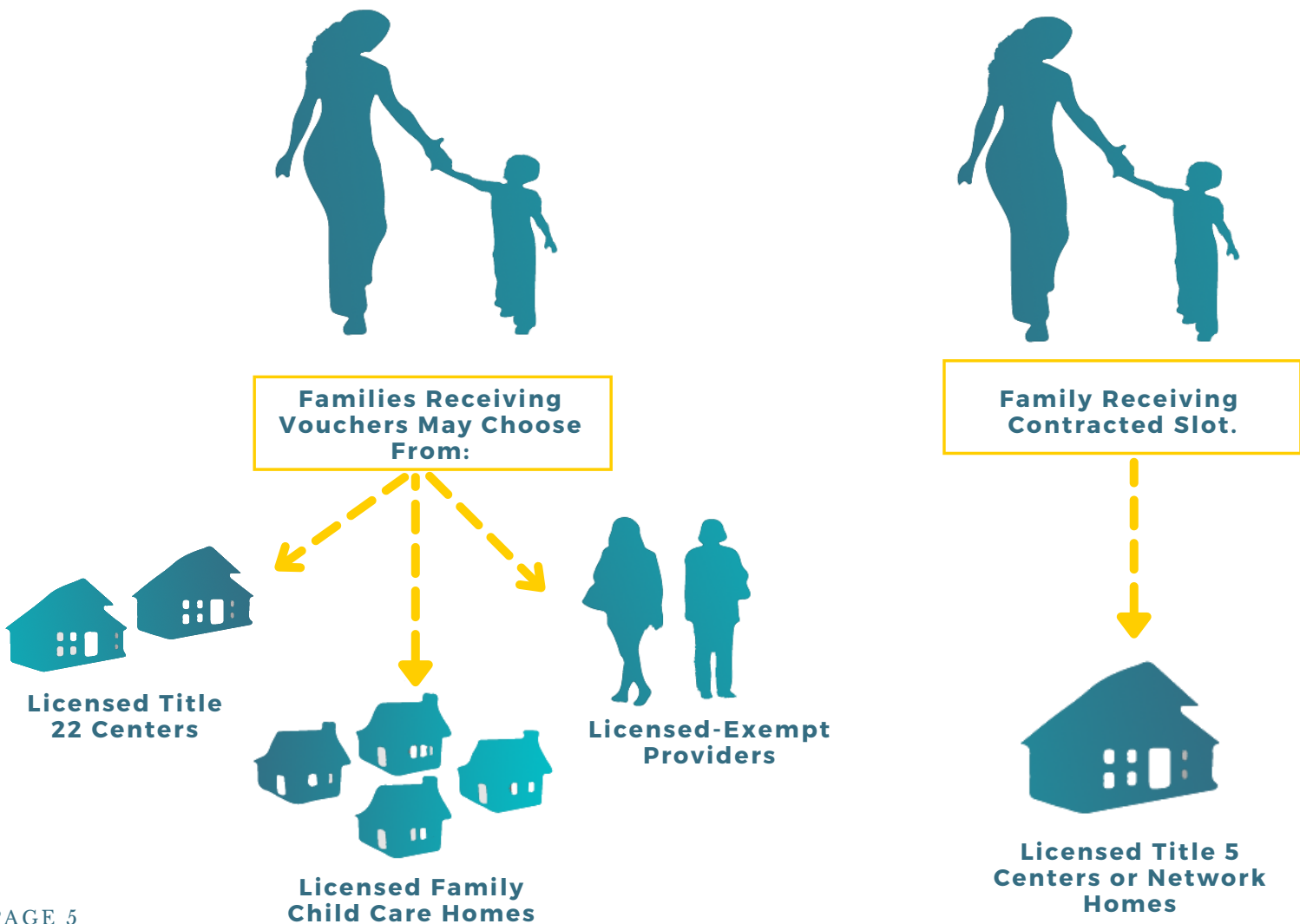


All families can access resource & referral support in finding child care, early learning, preschool, TK or afterschool support.



For low income families, the R&R can refer them to their local AP program or state contracted center or they can come directly.

From there, an eligibility determination is made.



PROGRAM TYPES



General school readiness programs make up one portion of California's ECE system. While these programs may have other benefits for children and families, they primarily focus on child development.

- **The California State Preschool Program** (state preschool) provides center-based preschool for children in low-income families.
- **Transitional kindergarten** is a school-based preschool program for children just below the age cutoff for enrollment in kindergarten, regardless of family income.
- **Head Start and Early Head Start** are preschool and child development programs serving children in low-income families, and includes Migrant and American Indian/Alaska Native programs.
- **Head Start.** In addition to education, these comprehensive programs offer care, extensive family engagement, and wraparound services.
- **District-based preschool** programs are preschool programs voluntarily offered by school districts, typically supported by federal Title I or local school funding.

California runs two clusters of ECE programs designed to support working parents that also play a role in early childhood development.

- **Alternative Payment Programs** provide voucher-based child care subsidies. Many of these vouchers, though not all, are provided through California's state welfare program, CalWORKs (California Work Opportunity and Responsibility to Kids). There is also a special Alternative Payment program serving migrant children.
- **General Child Care and Development** programs offer subsidized slots in ECE programs in which licensed providers with state contracts provide services. As with Alternative Payment programs, some slots are dedicated to migrant children.

STANDARDS AND REQUIREMENTS FOR CENTER BASED PROGRAMS

	TITLE 5 CHILD CARE CENTERS Standard Reimbursement Rate (SRR)	TITLE 22 CHILD CARE CENTERS Regional Market Rate (RMR)
Regulations	<ul style="list-style-type: none"> • Community Care Licensing • Health and Safety Standards • Educational Program Standards • Department of Education 	<ul style="list-style-type: none"> • Community Care Licensing • Health and Safety Standards • N/A • N/A
Ratios	1 Adult to 8 Students	1 Adult to 12 Students
Teacher Qualifications	<ul style="list-style-type: none"> • Teacher Permit • 24 Early Childhood Education Credits • 16 General Educations Credits • 105 hours of professional development for renewal 	<ul style="list-style-type: none"> • N/A • 12 ECE Units • N/A • N/A
Student Assessment	Complete 2 student assessments annually, using the Desired Results Developmental Profile	No Required Student Assessments
Regular Program Assessment	Self-evaluation including: <ul style="list-style-type: none"> • Annual Environmental Rating Scale • Annual Parent Survey Other evaluations include: <ul style="list-style-type: none"> • Contract Monitoring Review every three years • New Preschool Foundations, Curriculum, Frameworks, Audits, State and Federal Reviews 	No Ongoing Program Assessment
Program Requirements	<ul style="list-style-type: none"> • Developmentally, linguistically and culturally appropriate programs (inclusive of special needs). • Supports students' social and emotional needs. • Provide indoor and outdoor space, and guidelines for active play and movement 	No Educational Program Requirements

What is CalWORKs?

The California Work, Opportunity and Responsibility to Kids (CalWORKs) child care program supports income eligible families access to immediate, short-term child care as the parent works or performs their welfare-to-work activity. The program is divided into three separate stages.

Stage 1

CalWORKs Stage 1 is an entitlement program run by the California Department of Social Services (CDSS) with the 58 county welfare departments responsible for administering or contracting it out to a local county Alternative Payment Program. Currently 37 of the 58 counties contract out Stage 1 child care.

Families are considered to be in Stage 1 when they first enter CalWORKs. To receive CalWORKs Stage 1, families must meet three basic eligibility requirements: (1) the parent(s) must be receiving or have received CalWORKs cash assistance or grants (for former CalWORKs cash assistance or grant participants, family income must be below a specified level); (2) the children must meet age and relationship requirements, (3) the adults must need child care in order to work, attend mandated activities, or participate in county approved welfare-to-work activities, such as education or training.

Stage 2

Once the family satisfies their welfare-to-work activity and need for child care are “stable” the family can be transferred to CalWORKs Stage 2. The advantages for families transitioning to Stage 2 is a longer child care

authorization period (not less than 12 months) with a focus on stability and continuity of care for the child and the family. Stage 2 is also an entitlement programs that a family can stay in for 24 months.

Stage 3

CalWORKs Stage 3 begins after a family has transitioned from their 24-months in CalWORKs Stage 2. Unlike CalWORKs Stage 1 or Stage 2, there is no time limit for receiving Stage 3 child care. Although Stage 3 is not an entitlement program, since 2010, it has been funded as such.

Parents in CalWORKs Stage 3 child care must meet the following general eligibility criteria:

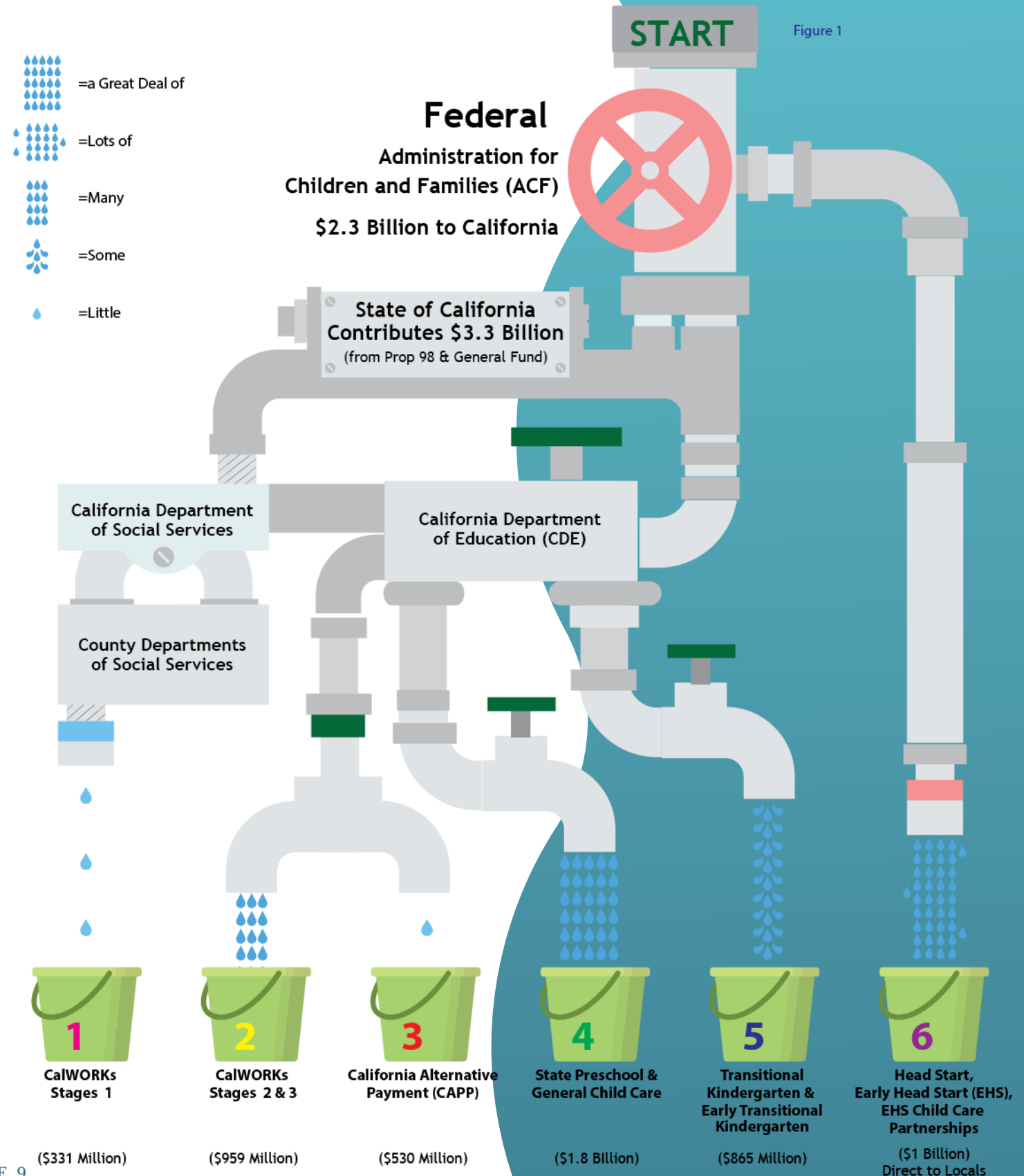
- The funded child(ren) must be between birth and 12 years old (or up to 22 years old if s/he is disabled and unable to care for him/herself).
- The parent must meet the CalWORKs work or work activity requirements.
- The parent must not exceed the income eligibility limit- currently at 85% of State Median Income (SMI) , adjusted for family size.

As long as the families continue to satisfy the above eligibility criteria, the family will continue to be recertified for not less that 12-months of eligibility.

FUNDING

The Administration for Children and Families (ACF) is the second largest agency within the federal government's Department of Health and Human Services. ACF administers more than 60 programs with a budget of over \$50 billion. They partner with states, communities and individual organizations to help families achieve prosperity and independence. In California, 3/5 of children under 13 live in families where parents work or are in school. This means that child care in our state is critical to child, family and community success with millions of dollars in subsidy payments going through every year. Local state dollars combined with the \$2.3 billion from federal contributes to Early Care & Education.

In general, subsidized child care services are available to eligible families who meet local and/or state requirements. [Figure 1](#) shows how the money comes from ACF + State of California and [Figure 2](#) describes each program and basic eligibility/qualifications.



HOW PROVIDERS ARE REIMBURSED

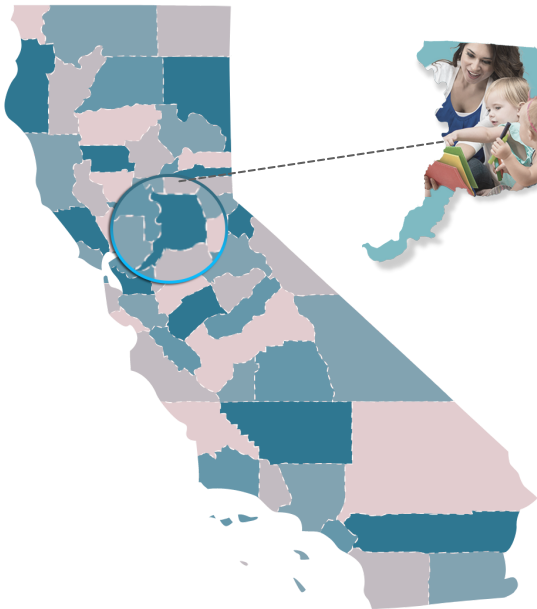


California currently has two systems for reimbursing early learning services: Child care providers meeting Title 22 standards are reimbursed using a Regional Market Rate (RMR) that accounts for geographic economic cost factors, While directly state-contracted early learning centers that meet Title 5 standards, in addition to Title 22 standards, are reimbursed at a flat Standard Reimbursement Rate (SRR).



SRR

- Contract-based programs - funding based per child.
- One flat fee across state, not based on regional differences.



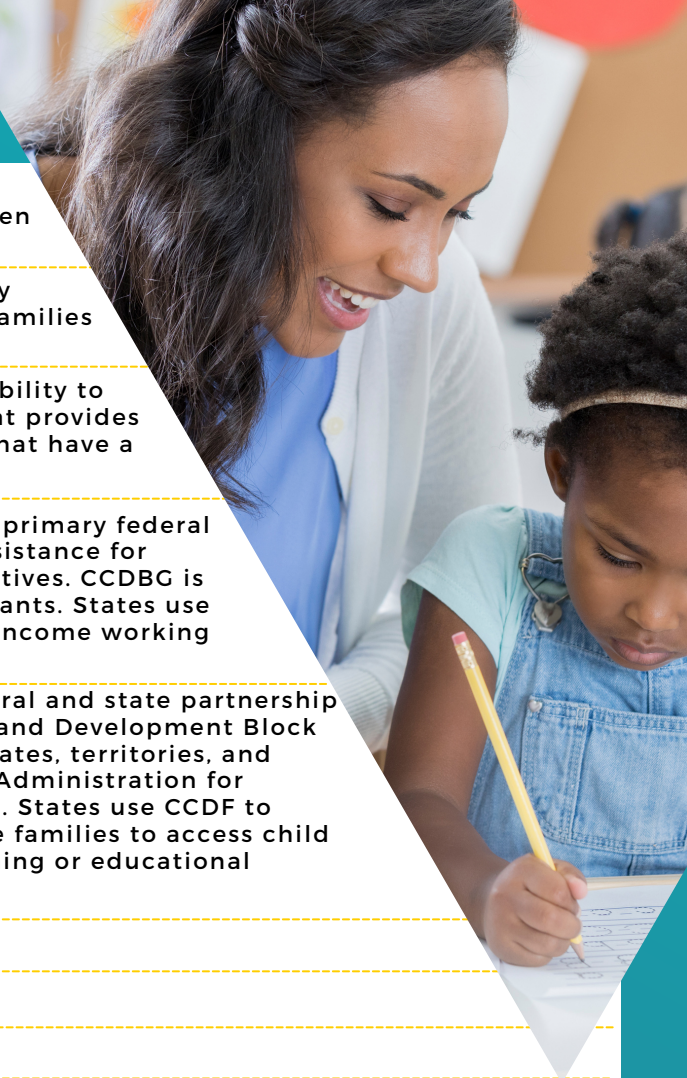
RMR

- Voucher-based programs: funded based on slots.
- Slot amount referenced to project number of budgeted slots is the average cost of care for child care in CalWORKs Stage 3.
- RMR survey is conducted every other year.

Program	Payment Type
CalWORKs Child Care	Voucher
Alternative Payment	Voucher
General Child Care	Direct Contract
State Preschool	Direct Contract
Care for Children with Severe Disabilities	Direct Contract
Migrant Child Care	Voucher and Direct Contract

ACRONYMS

ACF	United States, Department of Health and Human Services, Administration for Children and Families
APP/AP	Alternative Payment Program - Community contractors that support income eligible families with child care vouchers
CalWORKs	California Work Opportunity and Responsibility to Kids - it is a public assistance program that provides cash aid and services to eligible families that have a child(ren) in the home.
CCDBG	Child Care Development Block Grant - the primary federal grant program that provides child care assistance for families and funds child care quality initiatives. CCDBG is administered to states in formula block grants. States use the grants to subsidize child care for low-income working families.
CCDF	Child Care and Development Fund - a federal and state partnership program authorized under the Child Care and Development Block Grant Act (CCDBG) and administered by states, territories, and tribes with funding and support from the Administration for Children and Families' Office of Child Care. States use CCDF to provide financial assistance to low-income families to access child care so they can work or attend a job training or educational program
CCIP	Child Care Initiative Project
CCL	Community Care Licensing
CCP	Child Care Partnerships - Early Head Start
CDE	California Department of Education
CEL	Centralized Eligibility List
Co-payment	In voucher programs, if a family chooses a provider with a rate exceeding the Regional Market Rate (RMR) ceiling, the family must pay the difference, which is the co-payment.
CSPP	California State Preschool
CCTR	General Child Care
DPSS	Department of Public Social Services
DRDP	Desired Results Developmental Profile – Assessment tool for early infancy up to Kindergarten
ECPC	Early Care & Policy Council
EHS	Early Head Start
Family Fee	The parent/guardian's share of child care cost
FCC	Family child care reflects a home-like environment where non-medical care and supervision is provided
FCCHEN	Family Child Care Home Education Network
FFN	Family, Friend and Neighbor - refers to informal, home-based, relative kith & kin, legally unlicensed and license-exempt care
First 5	California Children and Families Commission - created by voters under Proposition 10 to recognize that children's health and education are a top priority, especially in the early years of development.



ACRONYMS



FT&C	Funding Terms & Conditions
Full-Time Rate	Rate a voucher program provider charges for full-time childcare (usually more than 6 hours/day)
GAIN	Greater Avenues to Independence
General Child Care	State and federally funded programs that use centers and family child care home networks operated by either a public or private agencies and local educational agencies. These programs provide an educational component.
LEA	Local Education Agency
MDO	Minimum Days of Operation
MRA	Maximum Reimbursable Amount
NOA	Notice of Action
DRDP	Desired Results Development Profile – Assessment tool for early infancy up to Kindergarten
OHS	Office of Head Start
QRIS	Quality Rating and Improvement System/Quality Improvement System
R&R	Resource and Referral
RMR	Regional Market Rate - Rate the subsidy system will pay voucher program providers; determined through Regional Market Rate (RMR) survey; varies by county
SMI	State Median Income
SRR	Standard Reimbursement Rate – Rates paid to direct service providers
TANF	Temporary Assistance to Needy Families
Trustline	California's registry of background cleared exempt child care providers.
Voucher	An amount that can be reimbursed based on a families certified need or maximum hours of care

IMPACTFUL LEGISLATION

The following bills are impactful to working families, family child care providers and centers, and children. The referencing of bills below is **not** meant to convey a position.

WORKING FAMILIES

AB 92

(Reyes)

Waiving Family Fees

SB 393

(Hurtado)

Allowing migrant families access to more vouchers

FAMILY CHILD CARE PROVIDERS & CENTERS

AB 22

(McCarty)

Expanding access to full-day Transitional Kindergarten (TK)

AB 865

(Quirk-Silva)

Reimbursing providers based on enrollment and not attendance

AB 1363

(Rivas)

Identifying and Support Dual Language learners

SB 50

(Limón)

Expanding child care eligibility for family child care homes and centers

SB 246

(Reyes)

Establishing a single regionalized state reimbursement rate

OTHER

AB 393

(Leyva)

Supporting a seamless transition of Child care

CONTRIBUTIONS

Please feel free to reach out to
the following partners



Children
Now



RESOURCES

Field Resources

- **[*California Child Care Resource & Referral Network](#)** - Provides statewide data on child care issues; links to all resource and referral programs in California
- **[*California Alternative Payment Program Association \(CAPPA\)](#)** - Provides statewide information, data and resources for supporting income eligible families with access to child care vouchers as well as to food programs, housing, mental health and more.
- **[*Child Action, Inc.](#)** - Promotes the education and social welfare of children and families and to advocates on their behalf.
- **[*Child Care Alliance of Los Angeles](#)** - Represents and supports ten Resource & Referral and Alternative Payment agencies across Los Angeles County who deliver child care and early learning services/programs to thousands of children, families and child care providers.
- **[*Child Care Resource Center](#)** - Works diligently to bring our knowledge of the needs of the children and families served in our communities to decision makers at the local, state and federal government.
- **[*Child Development Associates](#)** - Create opportunities for Southern California Communities to thrive.
- **[*Children Now](#)** - Advocates a whole-child approach, covering the full-range of key children's issues, from prenatal through age 26, including early childhood development, education, children's health, childhood trauma and resilience, foster care, and youth justice.
- **[ECE Coalition](#)** - Advocates for state budget investments and policies that promote equity by serving the highest-need children first.
- **[*EveryChild Association of California](#)** - An advocacy and training organization that supports all publicly funded early care and education programs in California.
- **[First 5 California](#)** - Works to improve the lives of children and families throughout California. Our vision is that California's children receive the best possible start in life and thrive.
- **[*First 5 Association of California](#)** - Supports the 58 First 5 county commissions in building the early childhood systems and supports needed to ensure California's young children are safe, healthy, and ready to succeed in school and life.
- **[*Head Start California](#)** - Advocates for its members at the federal, state and local level to secure more funding, achieve beneficial policy changes and better serve California's most vulnerable children and their families.



Child Action, Inc.
Serving Sacramento County since 1976
(916) 369-0191

We empower families and child care professionals with the tools and support services they need to successfully care for children.

9800 Old Winery Pl,
Sacramento, CA 95827
916-369-0191

<https://wp.childaction.org>



For over 20 years, First 5s have built integrated systems that support the needs of the whole child and whole family across early learning and care, family resiliency, and comprehensive health and development. For specific information about First 5s in your district, please visit the following:

<https://first5sacramento.saccounty.net/Pages/default.aspx>

Data resources

- **[California Budget & Policy Center](#)**
- **[California Child Care Resource & Referral Network - Child Care Portfolio](#)**
- **[California Department of Social Services](#)**
- **[California Department of Education Child Development](#)**
- **[KidsData - Find data about the health and well being of children in communities across California](#)**
- **[Legislative Analyst's Office](#)**